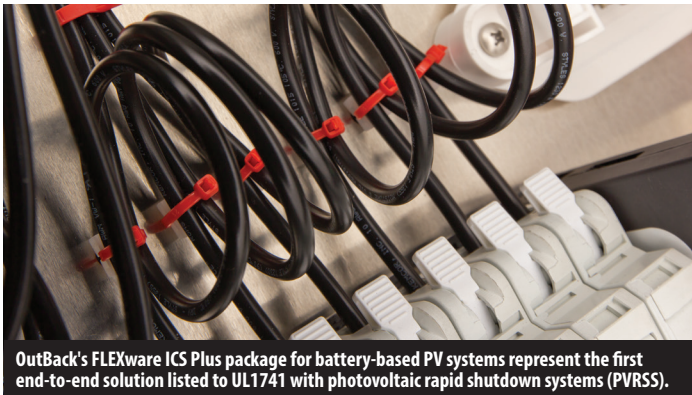
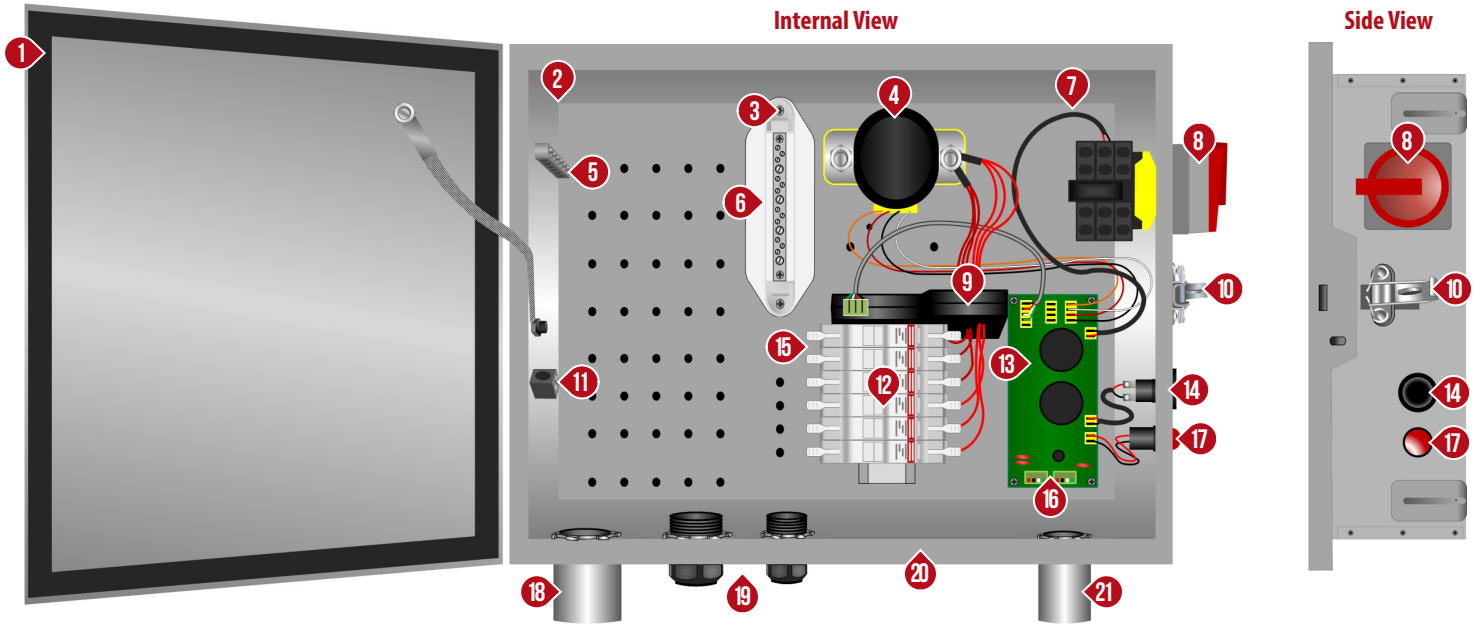


# FLEXware ICS Plus Combiner Box



Features and Specifications of the OutBack FWPV6-FH600-SDA



## FLEXware ICS Plus Combiner Box Features

- 1 Type 3R Enclosure with Gasketed Lid
- 2 Removable Component Panel
- 3 Negative Terminal Bus Bar
- 4 Main PV Contactor
- 5 Ground Terminal Bus Bar
- 6 PV Grounded Connections
- 7 Internal Pre-Wiring
- 8 PV Combiner Disconnect
- 9 Arc Fault Detection Device
- 10 Security Latch
- 11 Ground Cable Terminal
- 12 Fuse Holders
- 13 Combiner Control Board
- 14 Arc Fault Self-Test Button
- 15 PV Ungrounded Connections
- 16 RSI Communications
- 17 Arc Fault Annunciator
- 18 PV Output Conduit
- 19 PV Cable Glands
- 20 Surge Protection Device Knockout
- 21 RSI Communications and Power Knockout

### Specifications FWPV6-FH600-SDA

| Specifications                      | FWPV6-FH600-SDA  |
|-------------------------------------|--|
| <b>Description</b>                  | FLEXware ICS Plus DC combiner box with PV rapid shutdown, AFCI and disconnecting means compatible with up to 6 PV strings, opens up controlled conductors    |
| <b>Enclosure</b>                    | <b>Material:</b> Powder-coated aluminum<br><b>Rating:</b> Outdoor rainproof, UL type 3R <b>Security:</b> Lockable  |
| <b>Mounting Options</b>             | Vertical to horizontal, external feet provided for mounting  |
| <b>Number of String Inputs</b>      | 6  |
| <b>Total Maximum Current</b>        | 96A  |
| <b>Voltage Rating</b>               | 600VDC   |
| <b>Terminals</b>                    | <b>Output:</b> 14 - 2/0 <b>Input:</b> Cable glands #14 to 8 AWG (2.08 to 8.4mm <sup>2</sup> )  |
| <b>Operating Temperature</b>        | -25 to 60°C  |
| <b>Overcurrent Protection</b>       | Includes (6) 600VDC DIN rail fuse holders (fuses sold separately)  |
| <b>Switch</b>                       | Can be locked in off position  |
| <b>Accessories</b>                  | <b>FUSE-15-600VDC:</b> 10 Box of (10) x 15A fuses<br><b>FUSE-20-600VDC:</b> 10 Box of (10) x 15A fuses<br><b>FH-30-1000VDC-DIN:</b> 30A, 1000VDC fuse holder |
| <b>Dimensions H x W x D (in/cm)</b> | 15.5 x 19.5 x 4.5 / 39.4 x 49.5 x 11.4   |
| <b>Weight (lb/kg)</b>               | ~12 / 5.4  |
| <b>Certifications</b>               | UL1741 with photovoltaic rapid shutdown systems, UL1699B, CSA22.2, NEC690, FCC Class B   |

